

Appendicular Skeleton

Lower Limb

Femur

- Largest, strongest bone in the body.



Head

- Ball-like, fits into acetabulum



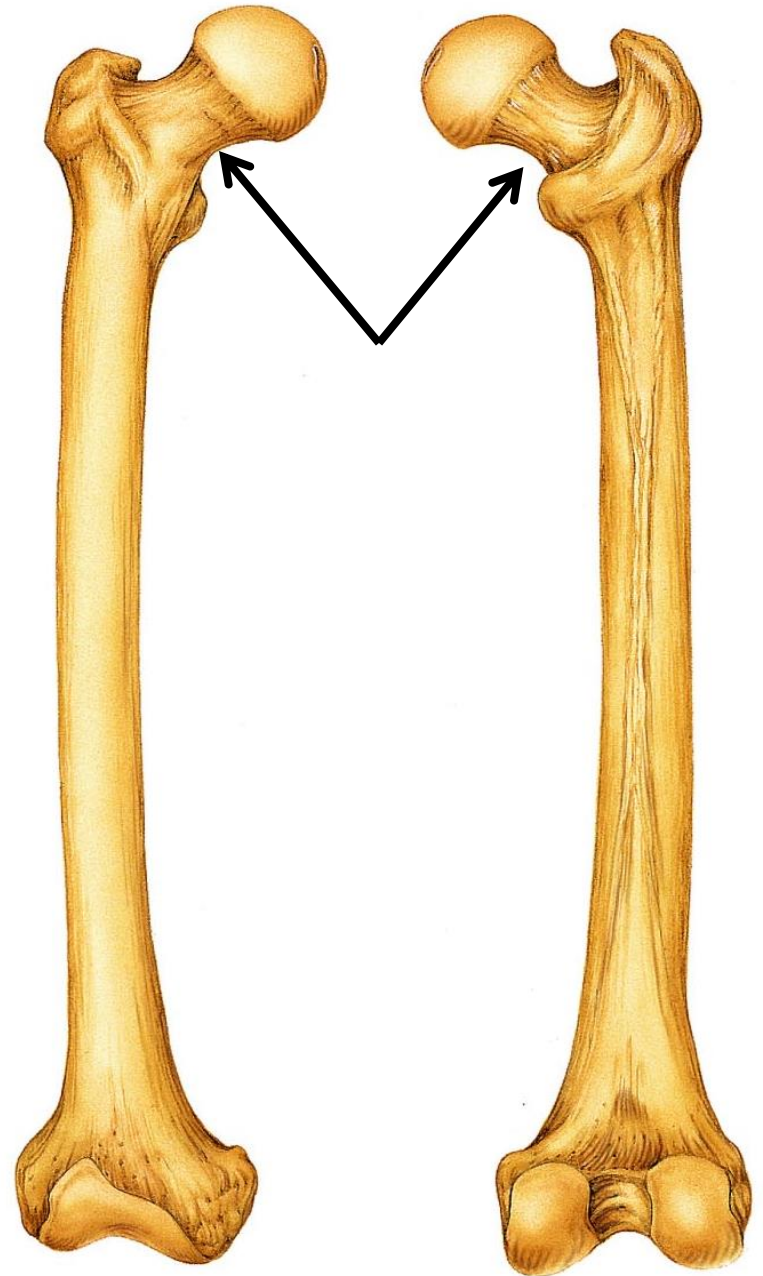
Fovea Capitis

- Found on head. Small central pit.
- Short ligament connects head of femur to acetabulum.



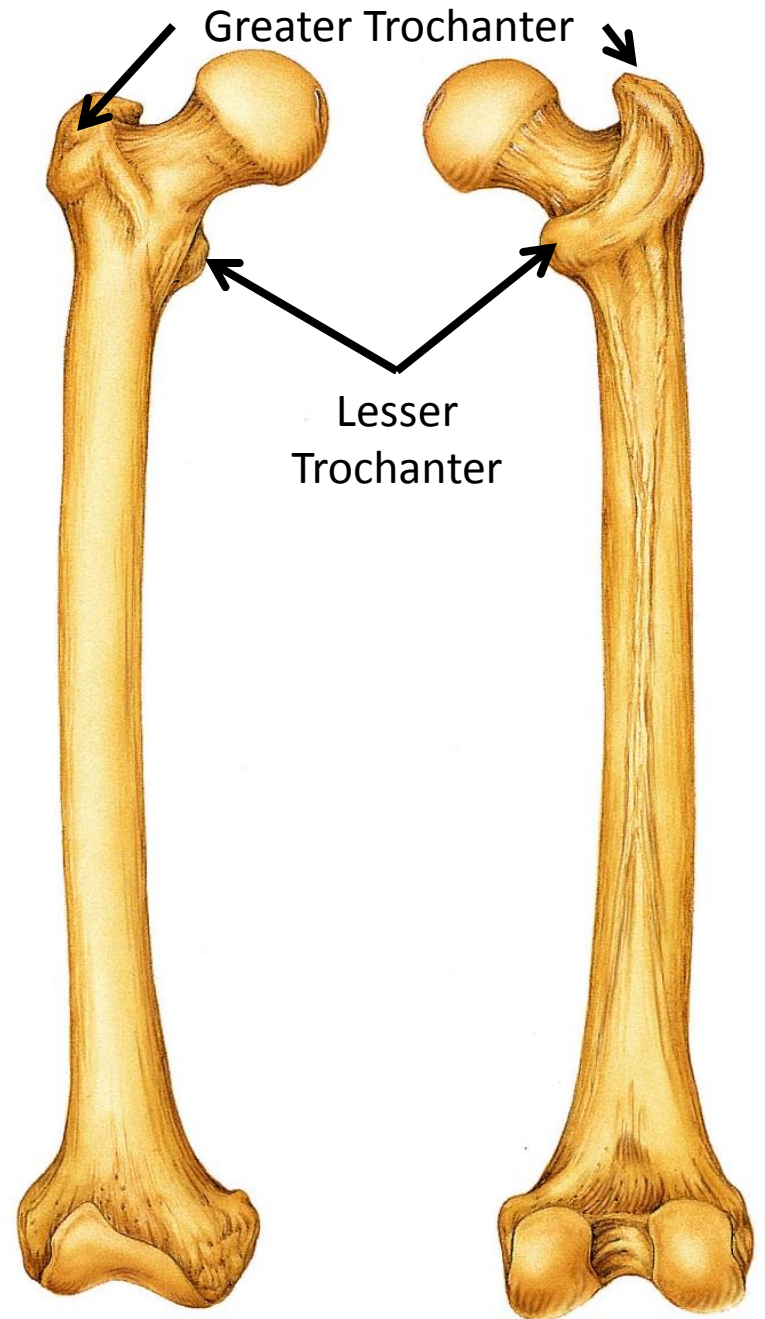
Neck

- Carries the head
- Weakest part of the femur and is often fractured → broken hip



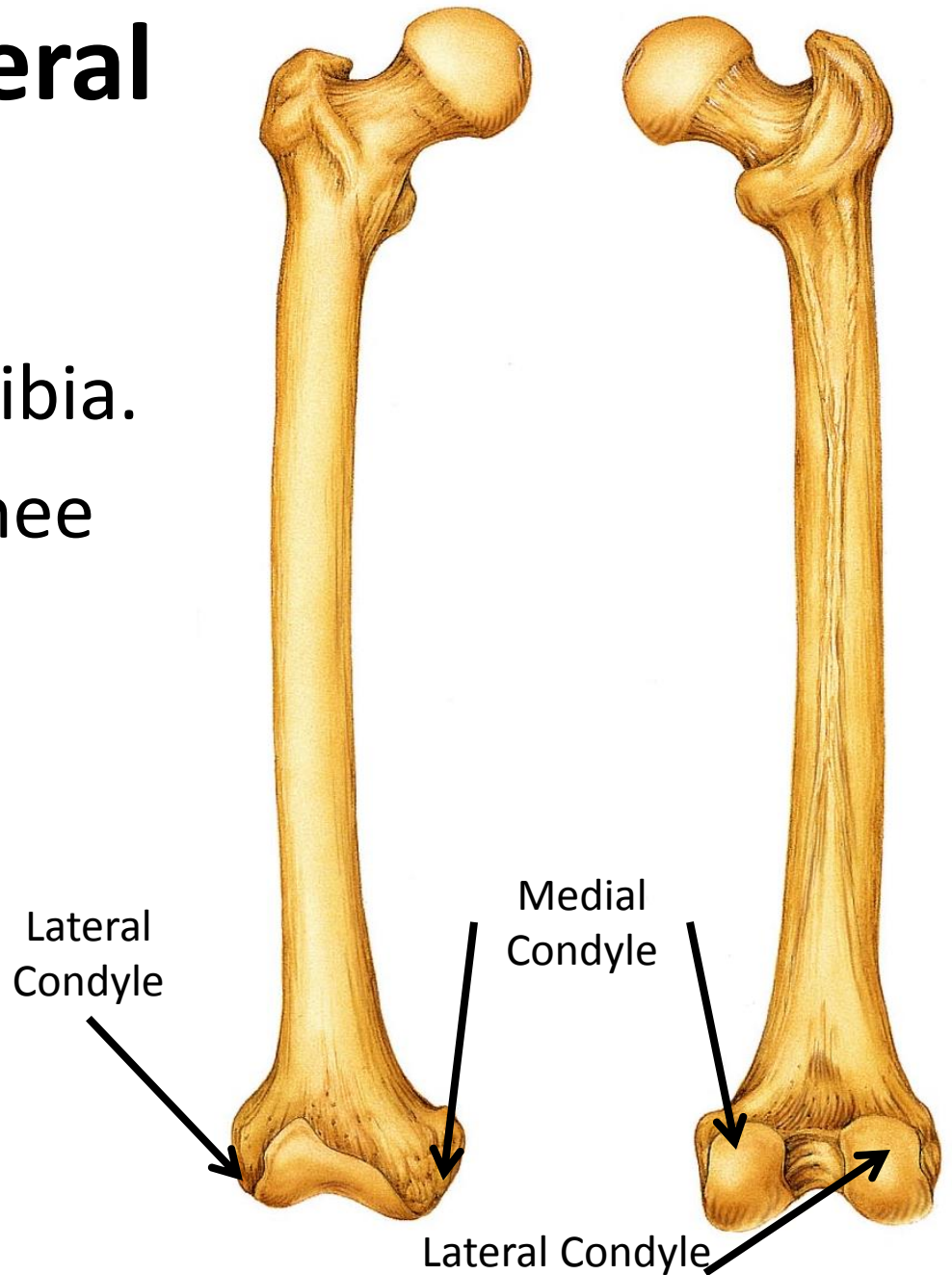
Greater & Lesser Trochanter

- Sites of attachments for butt and thigh muscles.



Medial & Lateral Condyles

- Articulate with the tibia.
- Helps to form the knee joint.



Intercondylar Fossa

- Found on posterior side of femur, between the condyles



Patellar Surface

- Smooth surface found between the two condyles on the anterior surface.
- Where the kneecap articulates



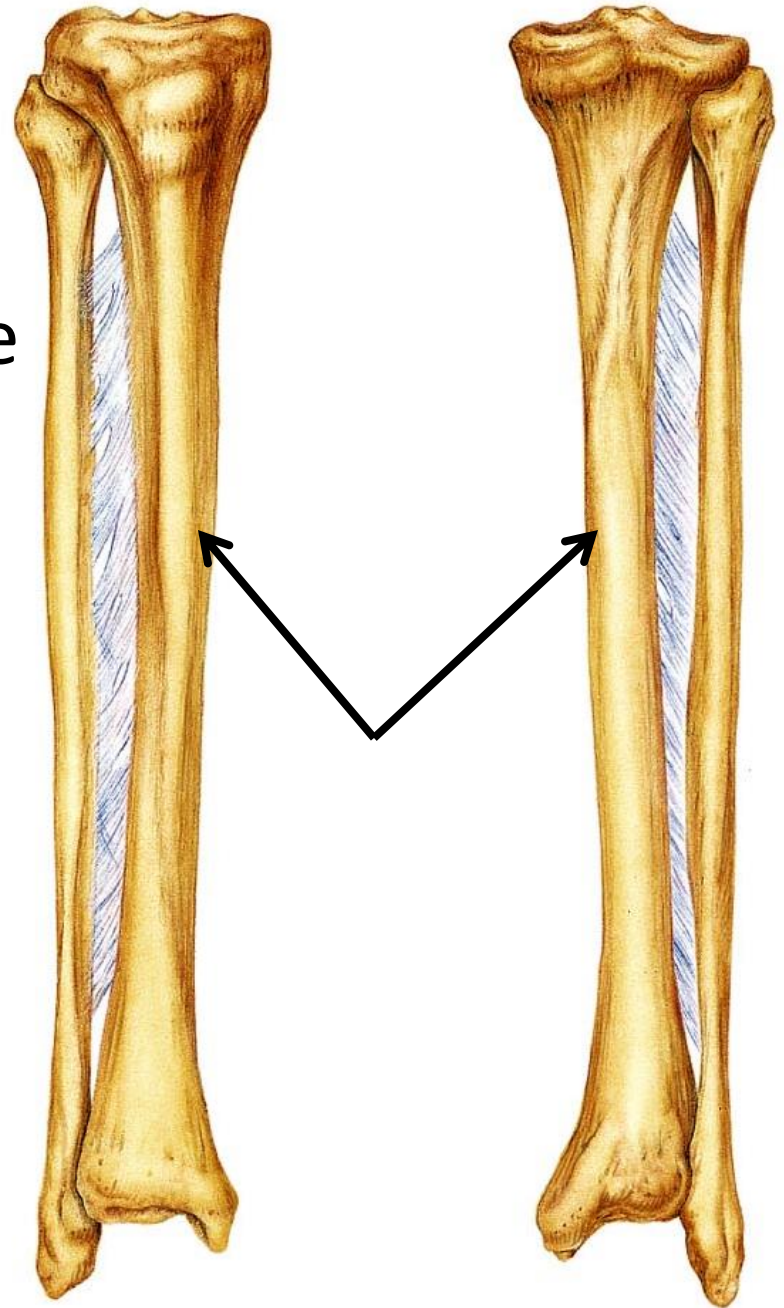
Patella

- Triangular sesamoid bone.
- Enclosed in the quadriceps tendon.
- Protects knee joint and improves leverage.



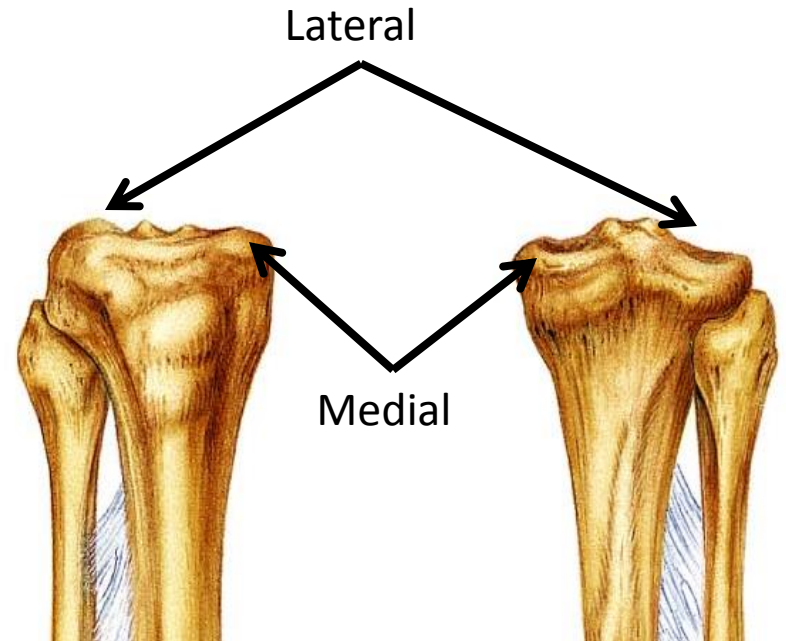
Tibia

- Receives the weight of the body from the femur and transmits it to the foot.
- Medial bone of the lower leg



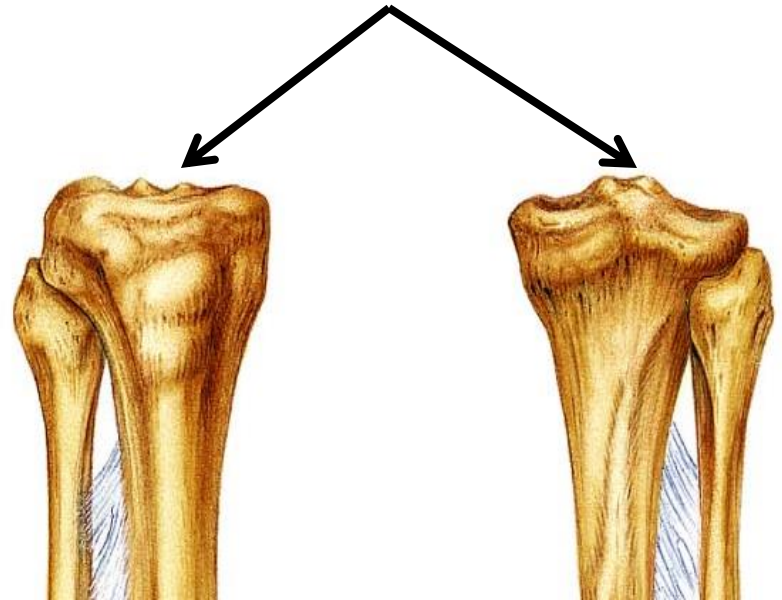
Articular Surface of Medial & Lateral Condyles

- Articulate with corresponding condyles of the femur.



Intercondylar Eminence

- Irregular projection found between condyles



Tibial Tuberosity

- Rough, where the patellar ligament attaches



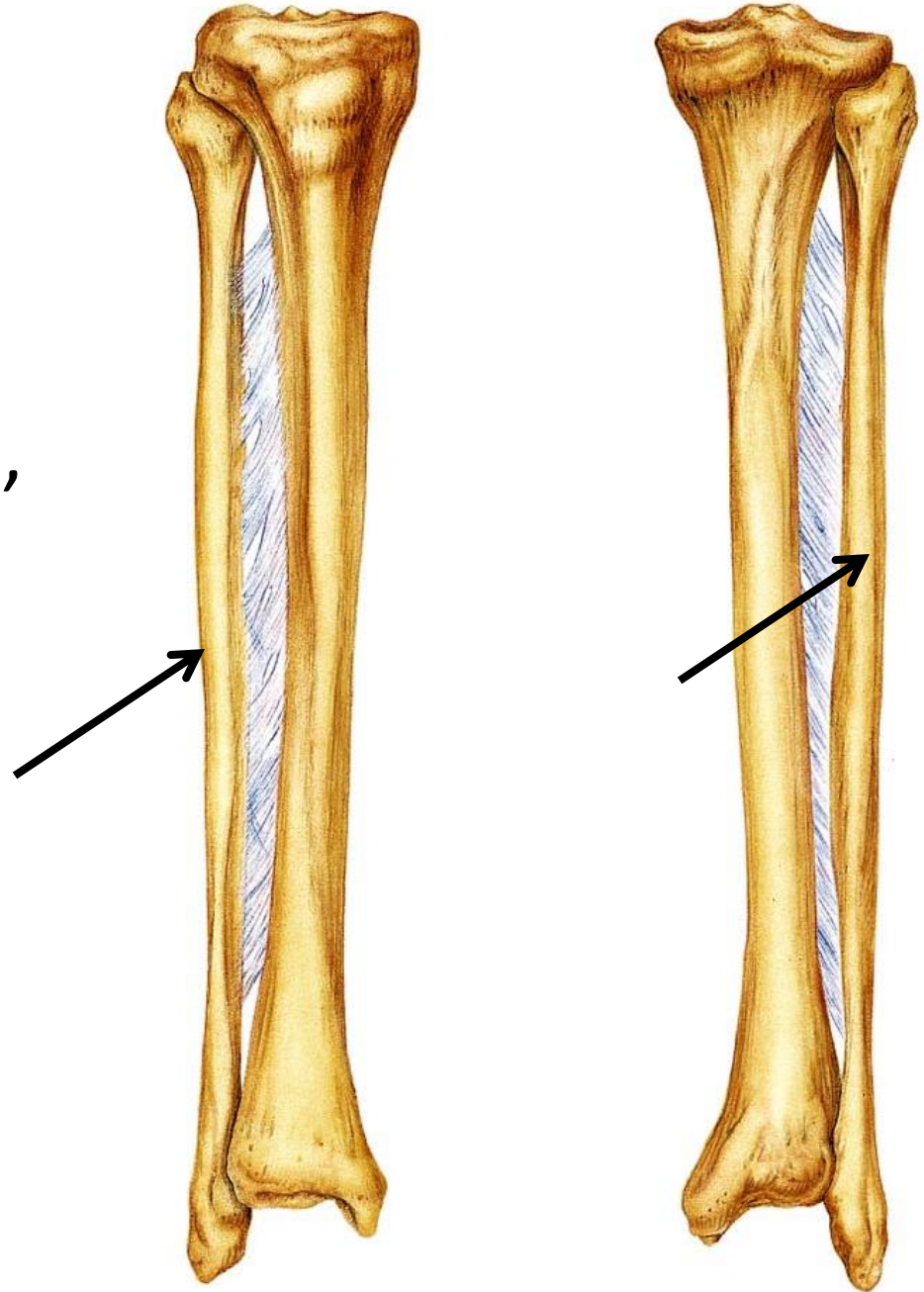
Medial Malleolus

- Articulates with the Talus.
- Forms the medial bulge of the ankle.



Fibula

- Stick-like bone.
- Does not bear weight, but several muscles originate from it.



Lateral Malleolus

- Articulates with the Talus and forms lateral ankle bulge.

