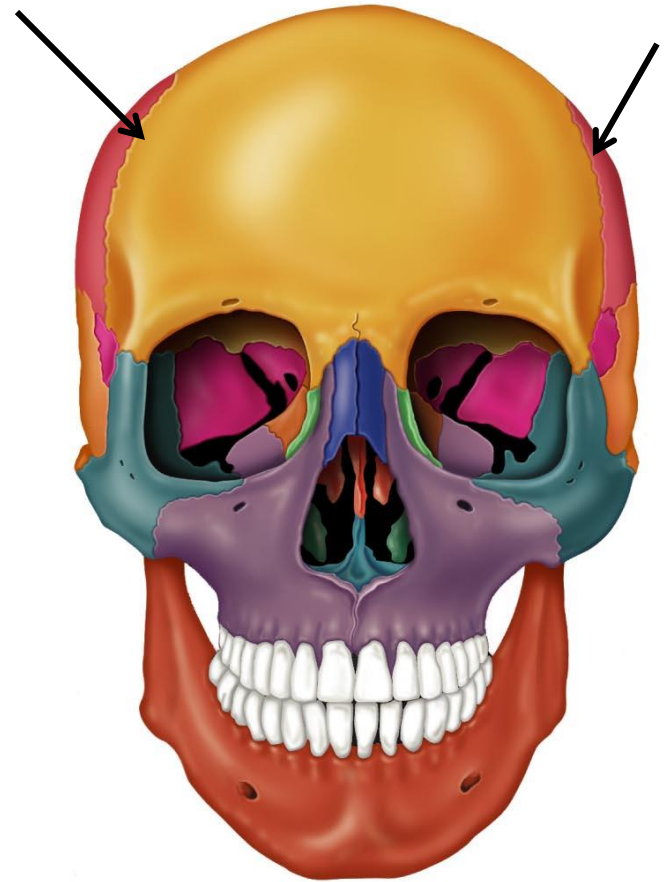
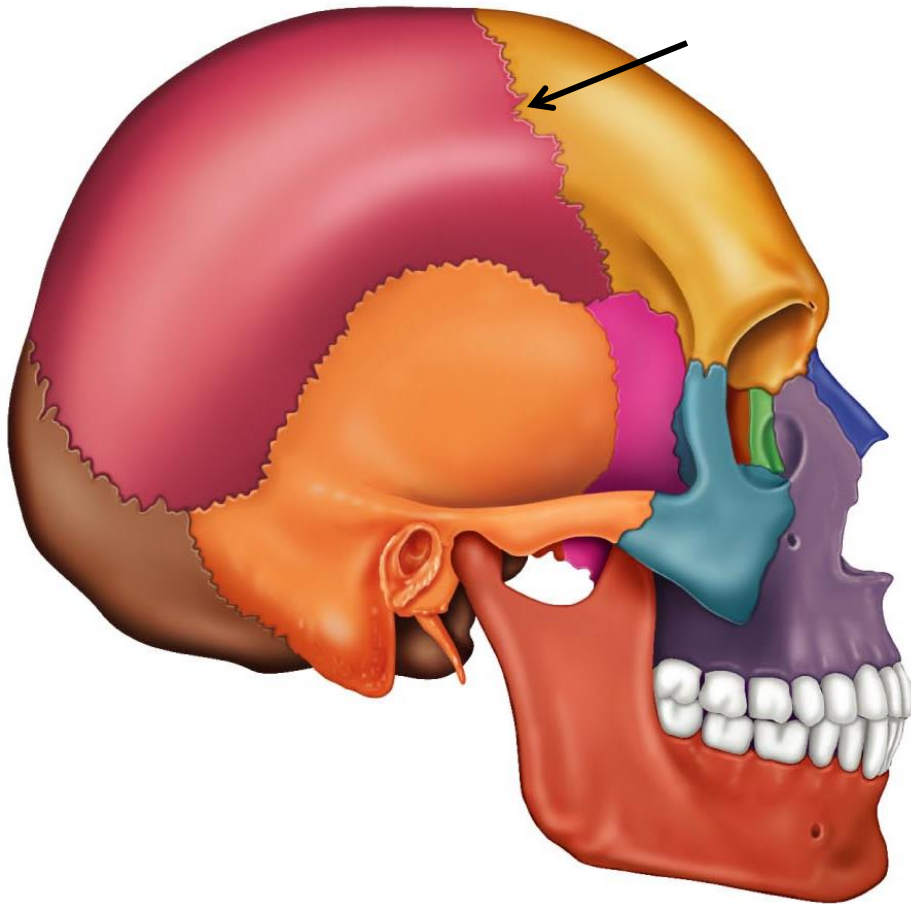


# **Axial Skeleton**

## **Sutures and Landmarks of Skull**

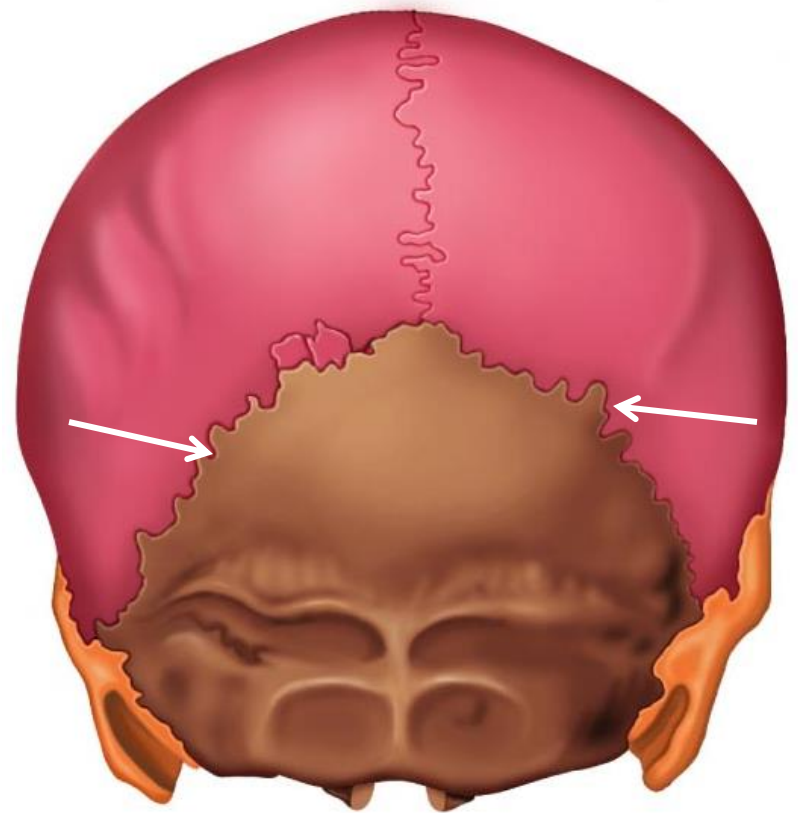
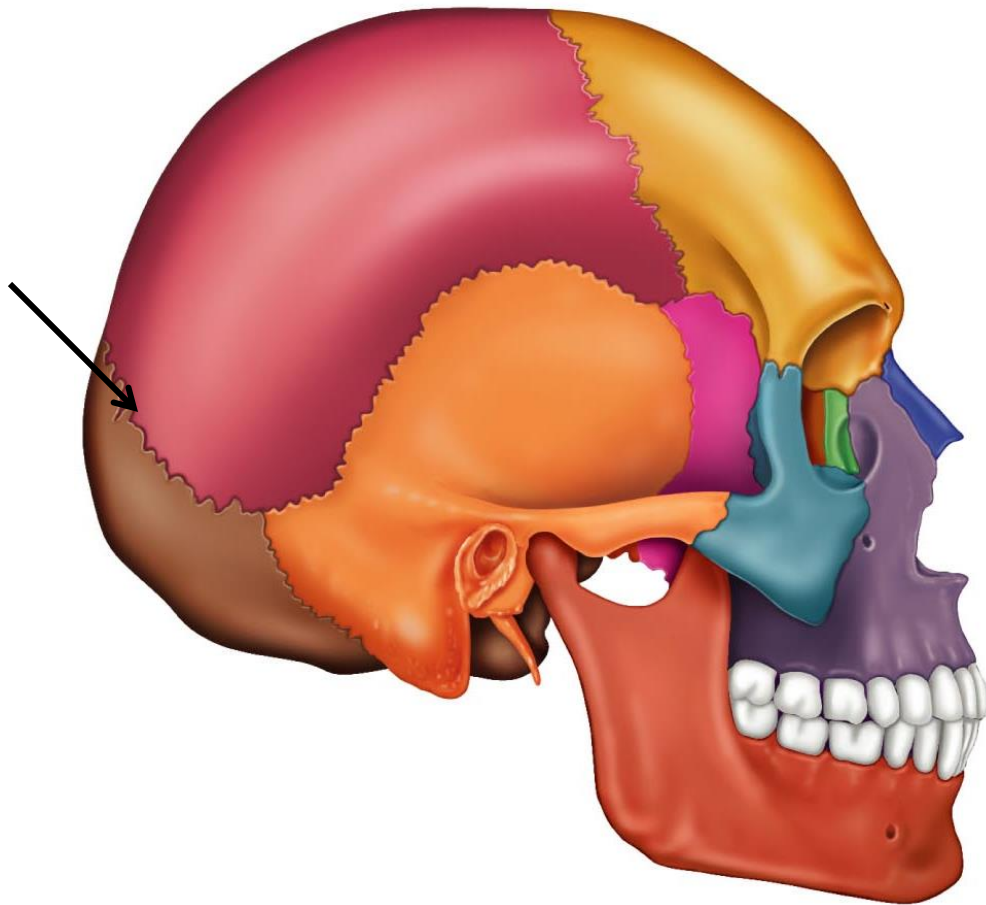
# Coronal Suture

Connects the frontal and the parietal bones



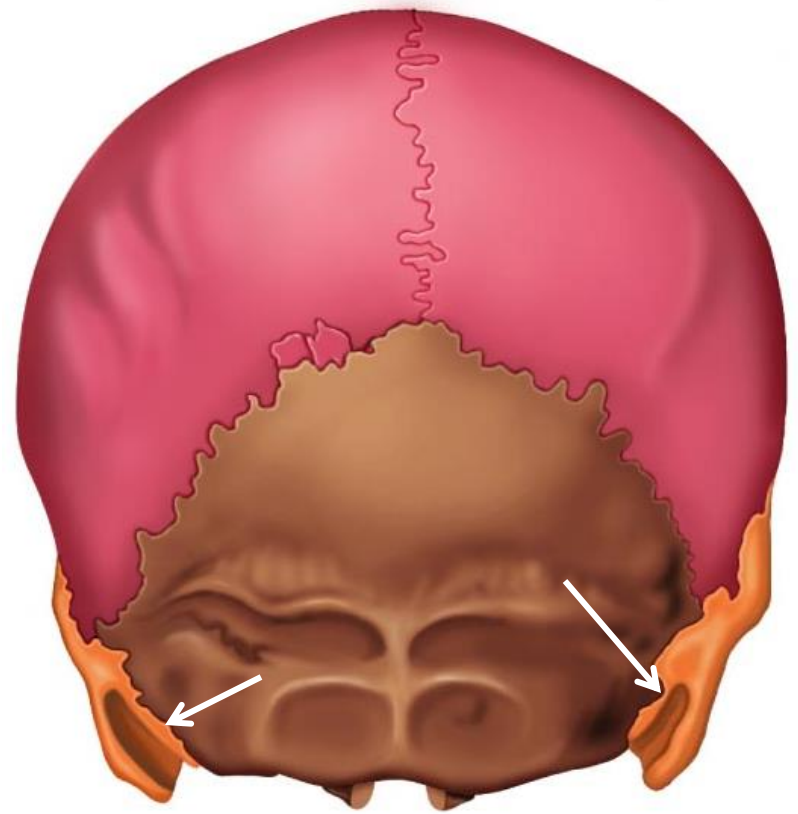
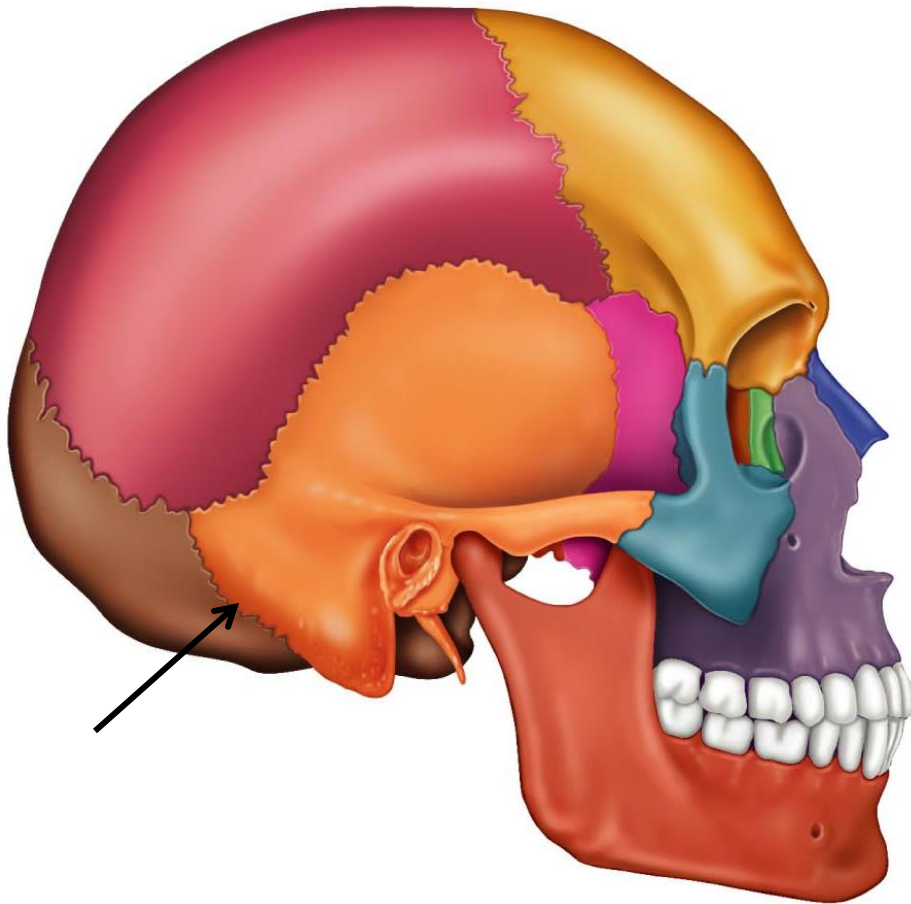
# Lambdoid Suture

Connects the occipital and parietal bones



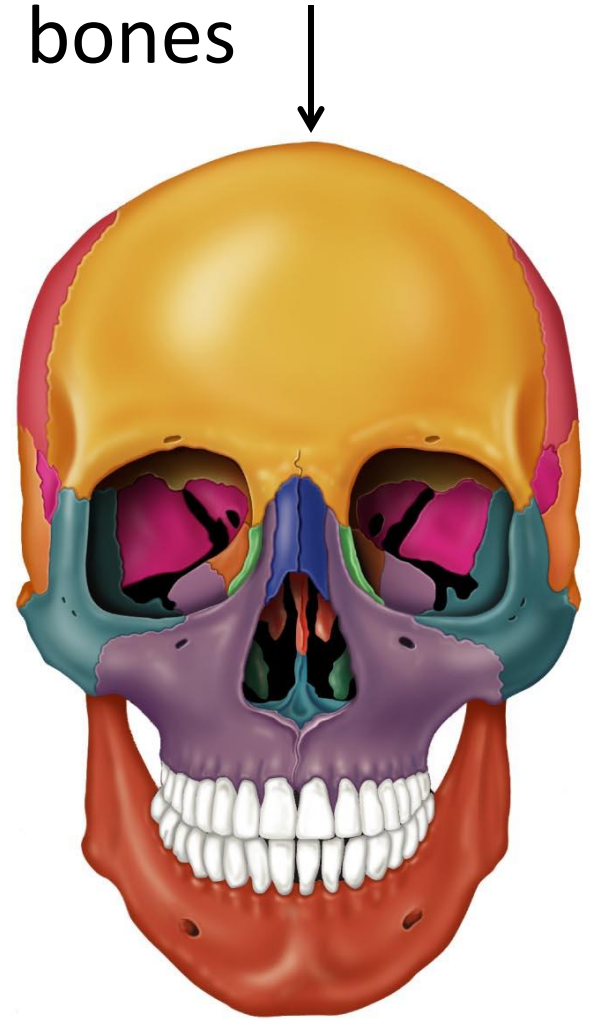
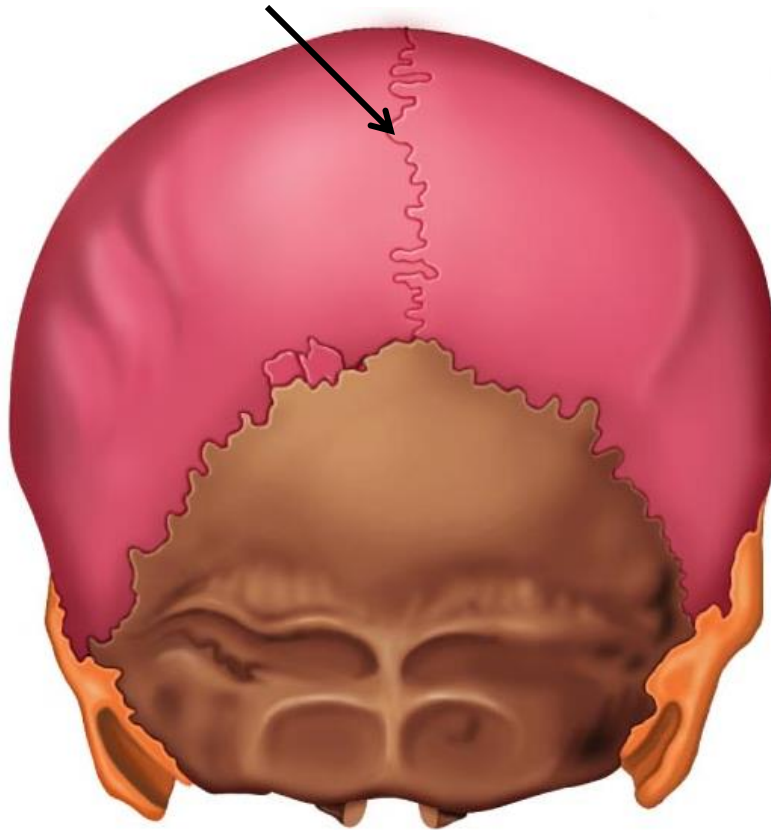
# Occipitomastoid Suture

Connects the temporal and occipital bones



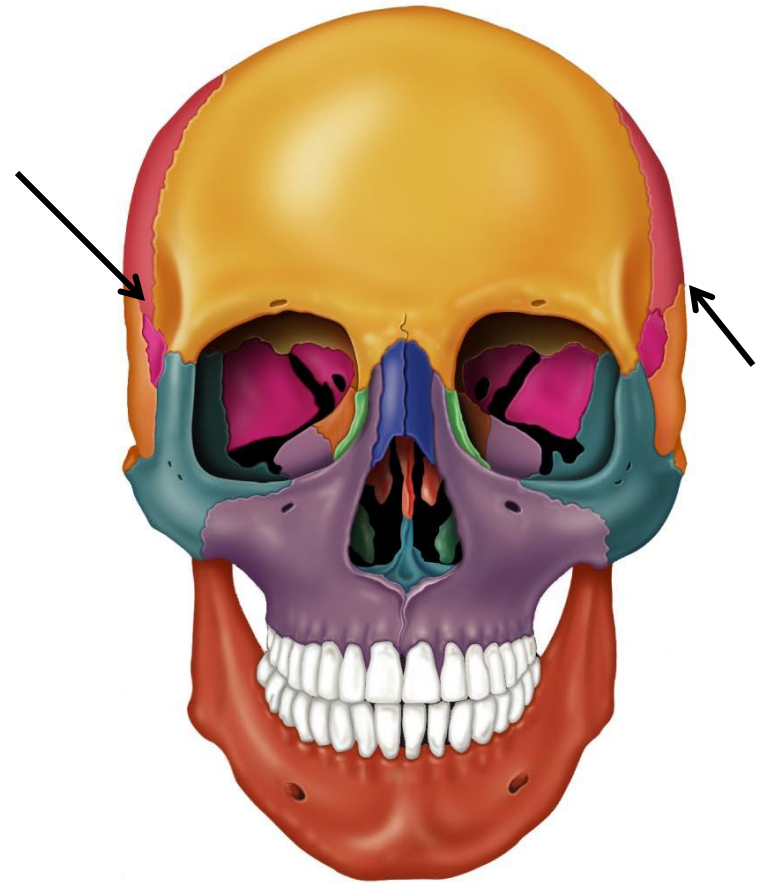
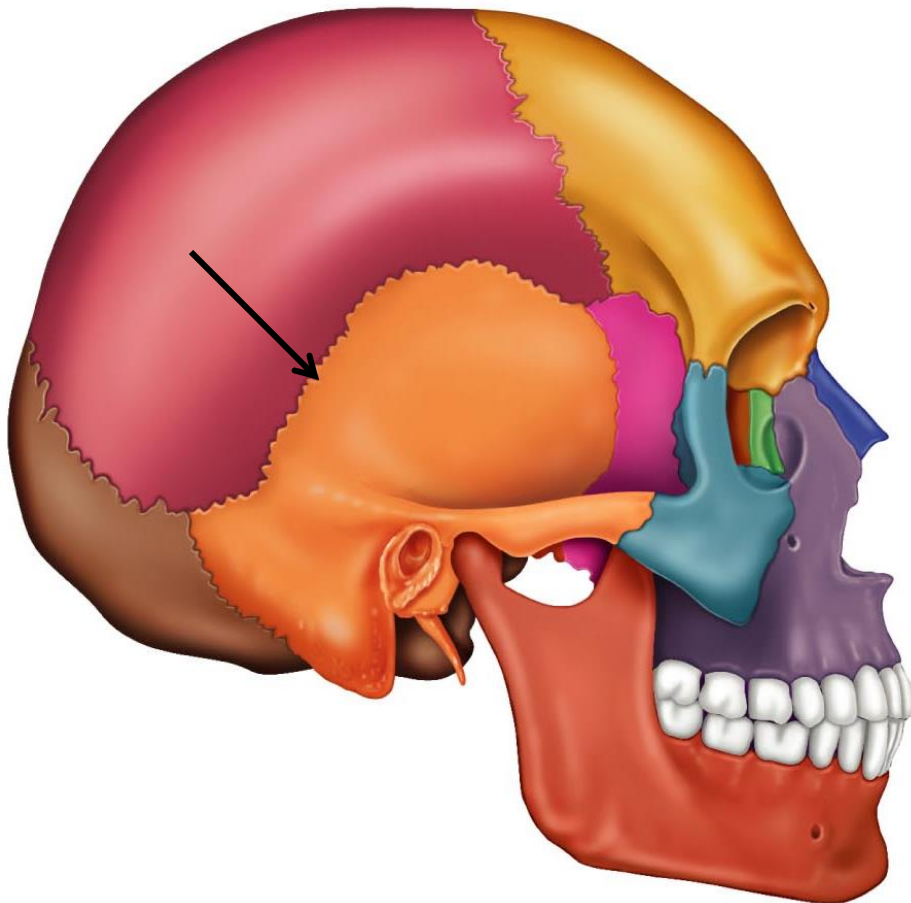
# Sagittal Suture

Connects the parietal bones



# Squamous Suture

Connects the temporal and parietal bones

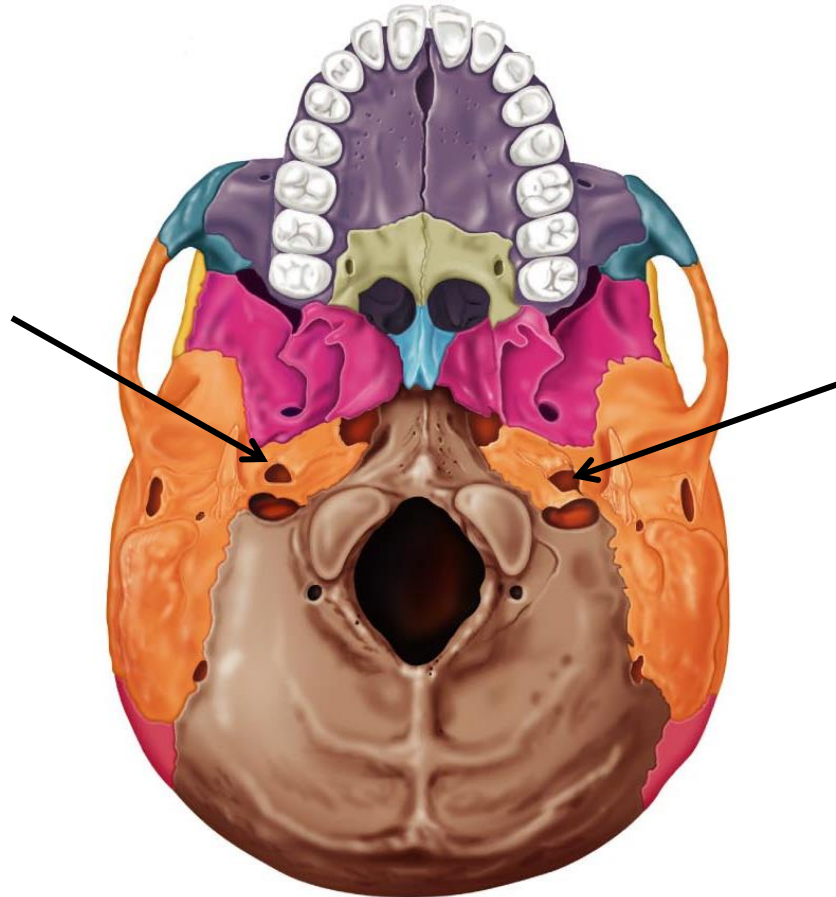


# **Axial Skeleton**

## **Landmarks of Skull**

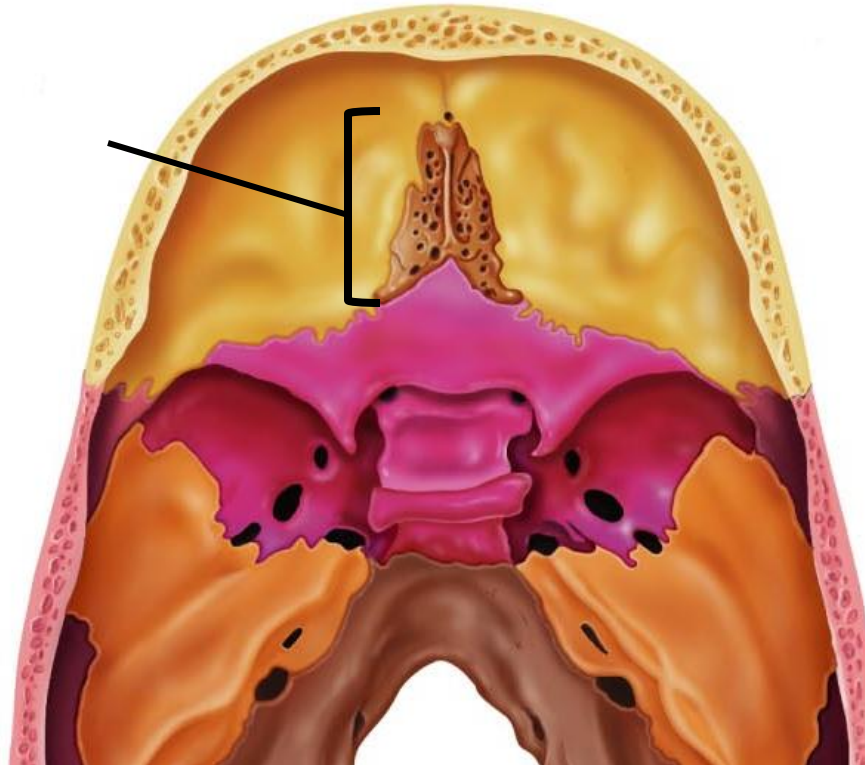
# Carotid Canal

Temporal – Anterior to the jugular foramen, transmits the internal carotid artery into the cranial cavity.



# Crista Galli

Ethmoid – “rooster’s comb” – triangular process. The outermost covering of the brain (dura mater) attaches here and helps secure the brain in the cranial cavity.



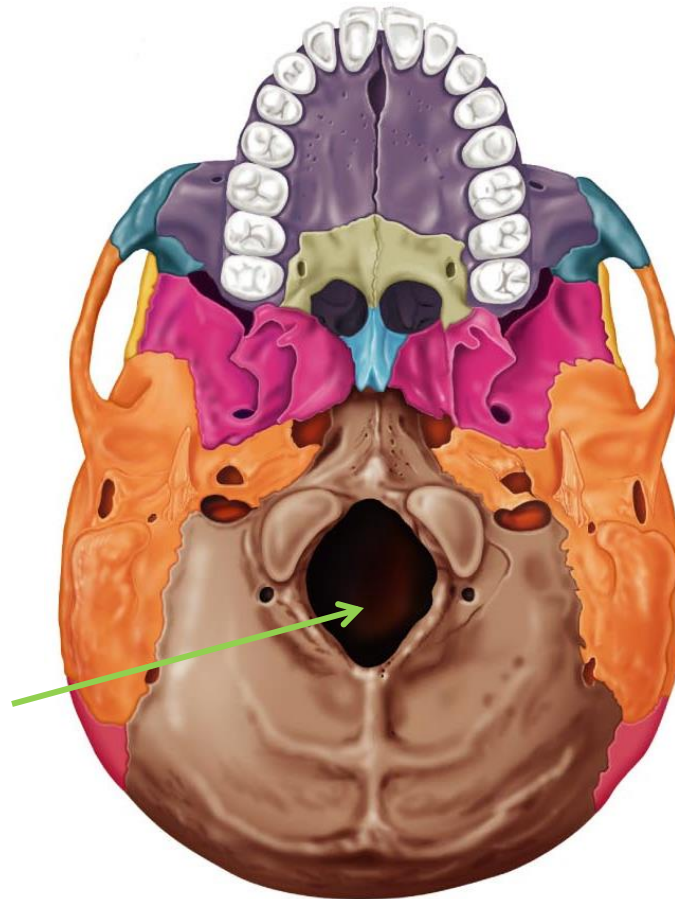
# External Occipital Protuberance

Occipital – Prominent midline projection. Secures the ligament that connects the vertebrae of the neck to the skull – which helps to support the head



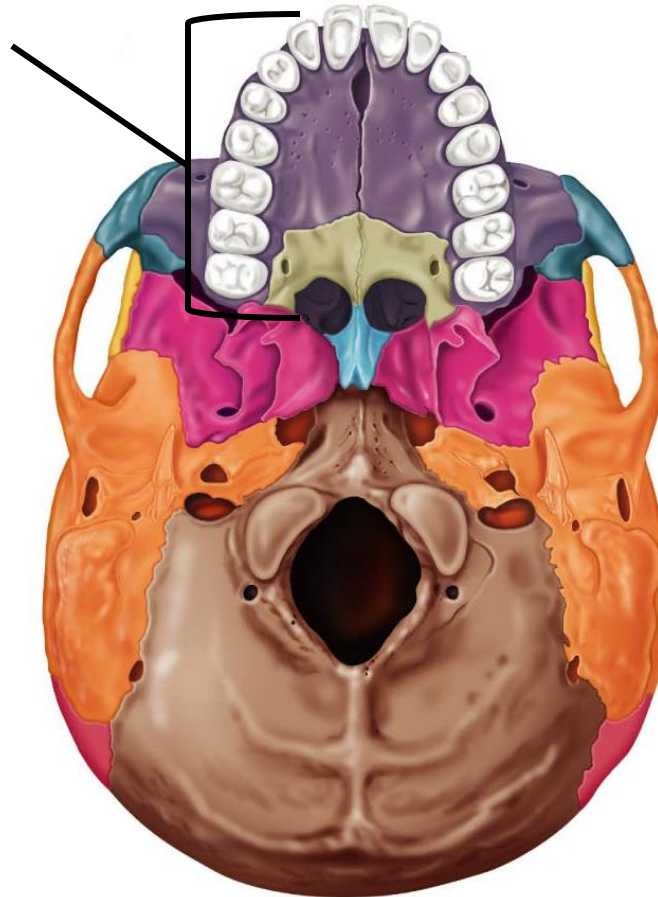
# Foramen Magnum

Occipital – Large hole in the base. The inferior part of the brain connects with the spinal cord.



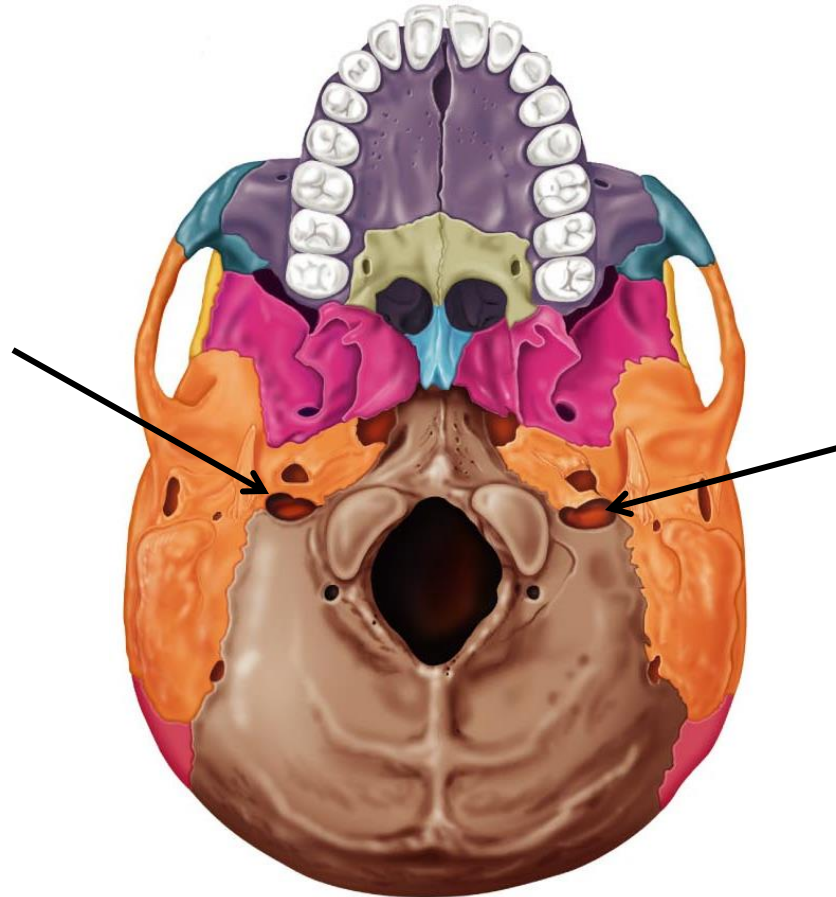
# Hard Palate

Maxillae and Palatine – bony roof of the mouth



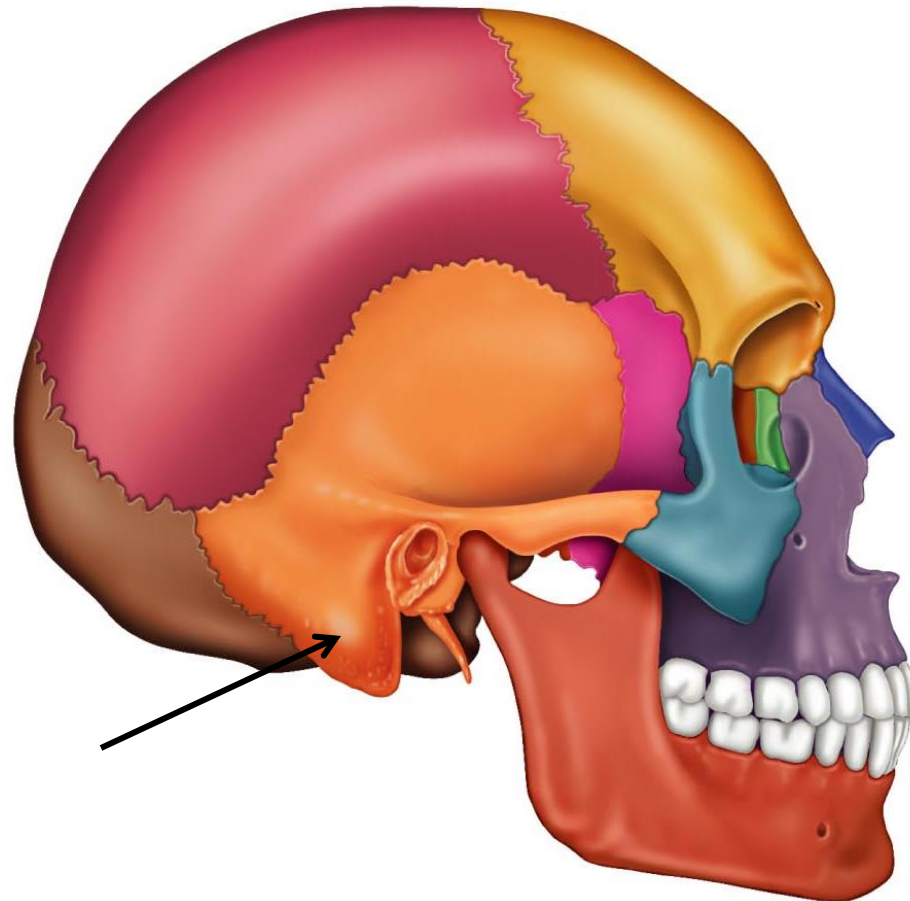
# Jugular Foramen

Junction of temporal and occipital – allows for the passage of the internal jugular vein and three cranial nerves.



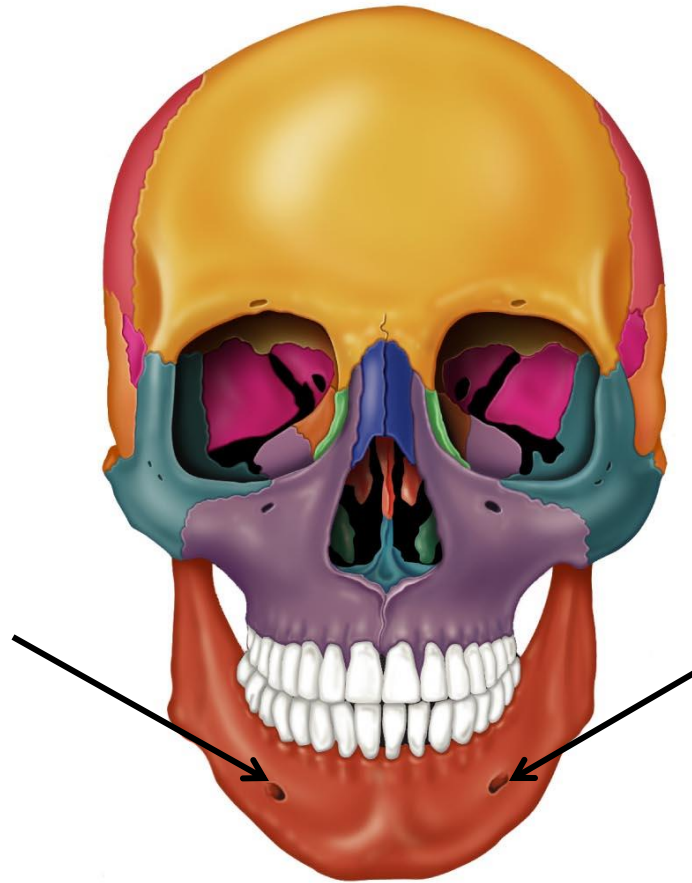
# Mastoid Process

Temporal Bone – Lump just posterior to the ear.  
Anchoring site for neck muscles.



# Mental Foramen

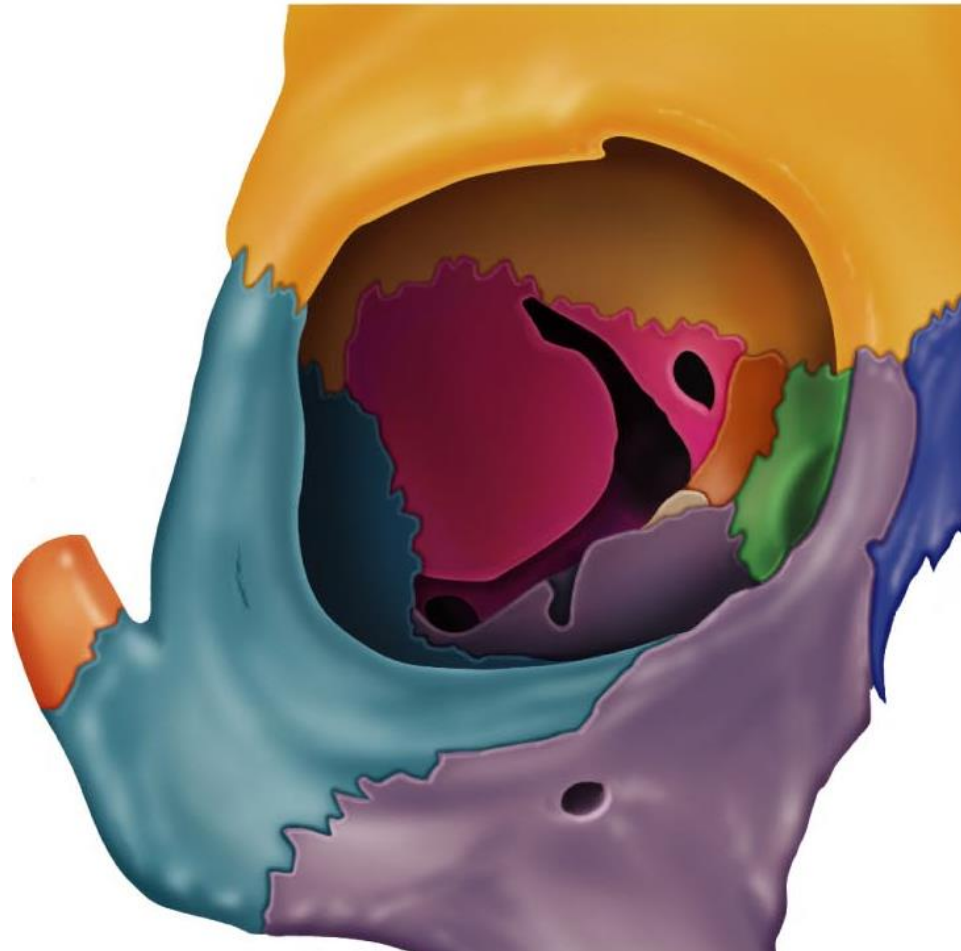
Mandible – Openings on lateral sides. Allow blood vessels and nerves to pass to the skin of the chin and lower lip.





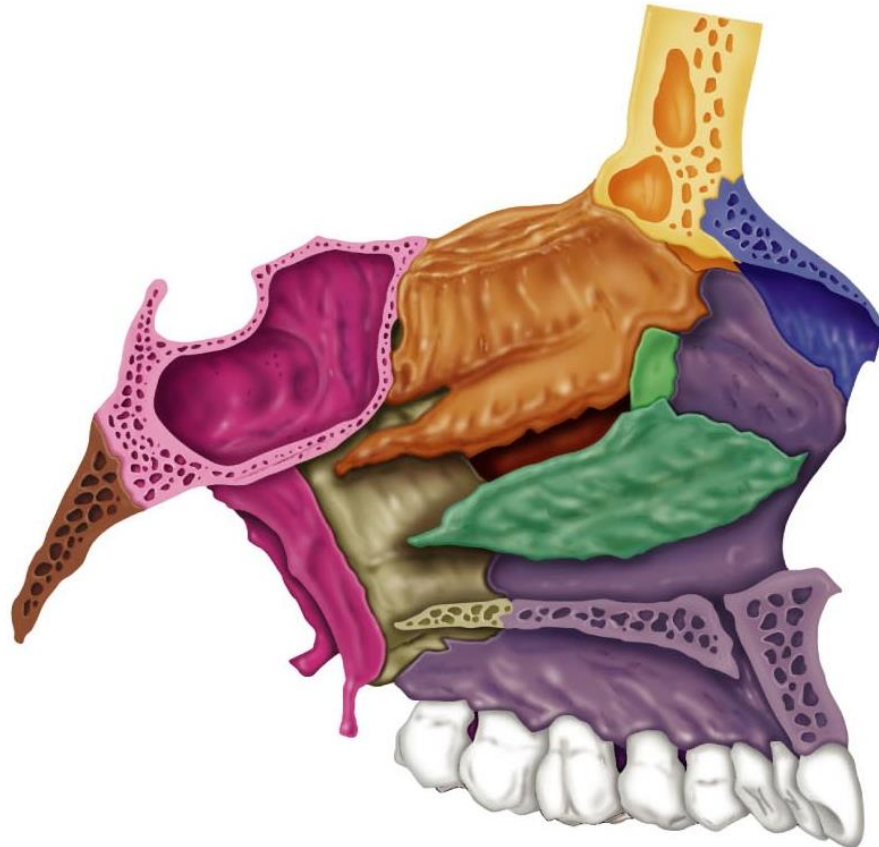
# Orbit

Frontal, sphenoid, zygomatic, maxilla, palatine, lacrimal, and ethmoid. Bony cavity where eyes are encased.



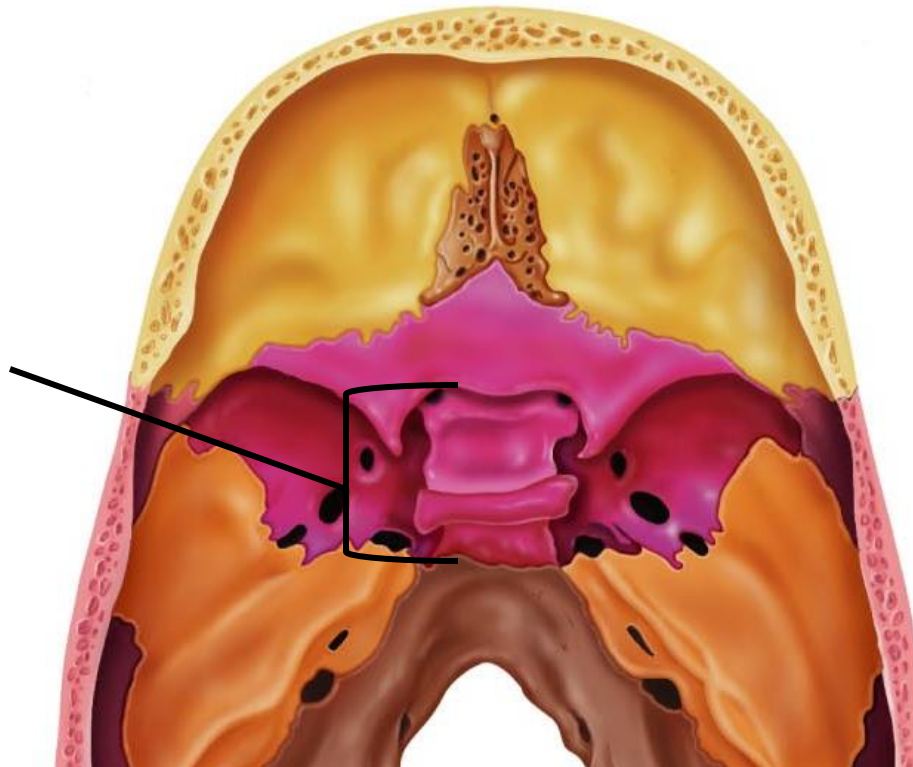
# Paranasal Sinuses

Sphenoid, frontal, ethmoid, and maxillary – mucosa-lined, air-filled sinus. Helps to warm and humidify air. Lightens skull. Resonating chamber for speech.



# Sella Turcica

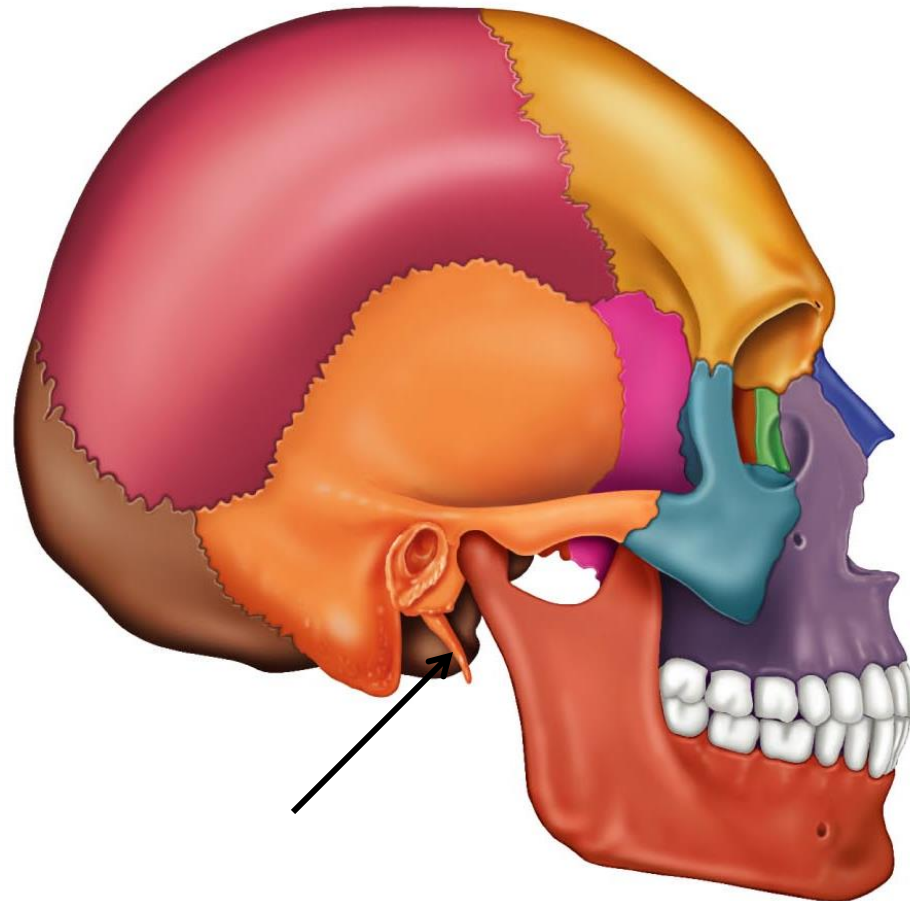
Sphenoid – Saddle shaped prominence. “Turk’s saddle”  
– encloses the pituitary gland



# Styloid Process

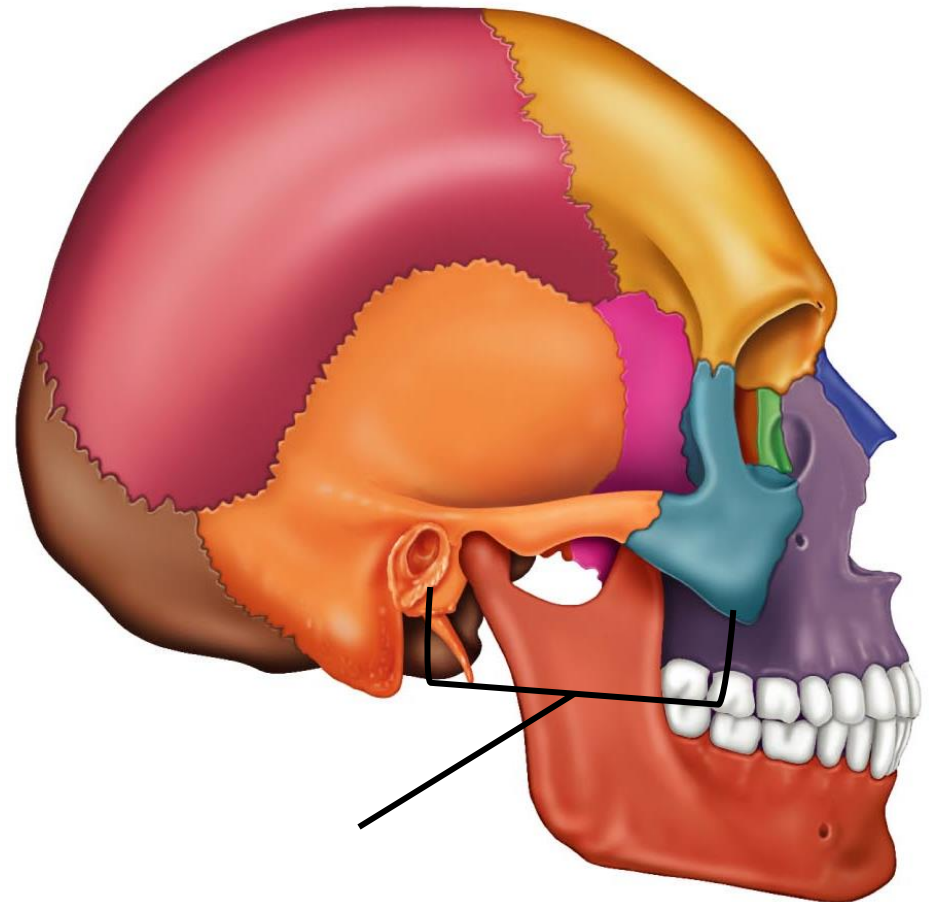
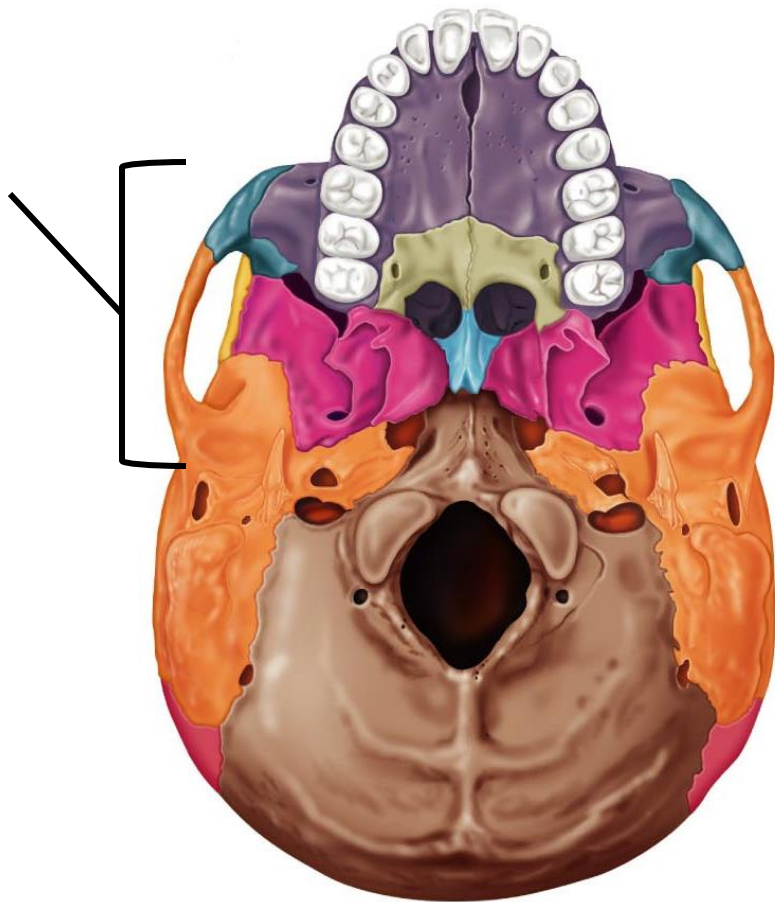
Temporal – needle-like process, medial to mastoid process.

Attachment point for tongue and neck muscles and for the ligament that secures the hyoid bone to the neck.



# Zygomatic Arch

Temporal and zygomatic – bony prominence of your cheek.



# Zygomatic Process

Temporal – bar-like projection, helps to form the zygomatic arch (cheekbone).

